

FOR MORE INFORMATION ON NET METERING, CONTACT:

Solar and Wind Energy Management Division (SWEMD),
Renewable Energy Management Bureau (REMB)
Department of Energy (DOE)
Energy Center, Rizal Drive, Bonifacio Global City,
Taguig City 1632

Telephone Nos.: (02) 8840-1817
(02) 8479-2900 locals 310 & 204

PREPARED BY:

Consumer Welfare and Promotion Office (CWPO)
Department of Energy (DOE)
Energy Center, Rizal Drive, Bonifacio Global City,
Taguig City 1632

Telephone Nos.: (02) 8840-2267
(02) 8479-2900 local 329

Email address: cwpo@doe.gov.ph

The 5 W's of NET METERING

What you need to know.



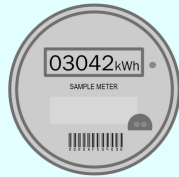
WHAT IS NET METERING?

Net-metering allows customers of Distribution Utilities (DUs) to install on their premises (houses, schools, buildings, etc.) a Renewable Energy (RE) facility not exceeding 100 kilowatts (kW) in capacity so they can generate electricity for their own use. Any electricity generated that is not consumed by the customer is automatically exported to the DU's distribution system.

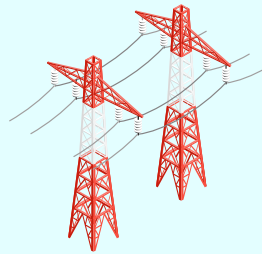
The RE systems include wind, biomass, biogas energy systems, run-of-river micro-hydro or such other RE systems, with or without battery energy storage. The rooftop solar photovoltaic (PV) is currently the popular RE Net-Metering technology.



Household with RE facility



Bi-directional meter



Utility Grid

WHEN DOES NET METERING TOOK EFFECT IN THE PHILIPPINES?

In the Philippines, the concept of Net-Metering was introduced in the Renewable Energy Act of 2008 (RA 9513).

On 27 May 2013, the Energy Regulatory Commission adopted ERC Resolution No. 09, Series of 2013 approving the Rules Enabling the Net-Metering Program for Renewable Energy as amended by Resolution No. 06 series of 2019. This resolution was published on 10 July 2013 in newspapers of general circulation in the country and took effect 15 days thereafter. Thus, the Net-Metering Rules took effect in the Philippines on July 24, 2013.

WHO ARE QUALIFIED TO PARTICIPATE IN THE NET-METERING PROGRAM?

DU customers who are in good credit standing in the payment of their electric bills to their DU are qualified to participate in the Net-Metering Program for Renewable Energy.

The Electricity End-users that are participants to the Net-Metering Program have been referred to as prosumers and Qualified End-users (QEs). Prosumers means that the QEs are both producers and consumers of electricity.

WHY GO INTO NET METERING?

By generating electricity for own use, you reduce the amount of electricity you buy from your local DU. You also earn peso credits on any excess electricity exported to the DU equivalent to the DU's blended generation cost, excluding other generation adjustments. The peso credits earned is then used to reduce your electric bill/s.

Also, being prosumers contribute in lessening the country's dependence on costly imported fossil fuels and helps mitigate climate change.

WHERE CAN YOU GET MORE INFORMATION ABOUT NET METERING?

You may check the links below:

Guidebook on Net-Metering in the Philippines

<https://www.doe.gov.ph/renewable-energy/guidebook-net-metering-philippines>

Net-Metering Guide

<https://www.doe.gov.ph/net-metering-home>

How to Apply for Net-Metering Services with your Distribution Utility

<https://www.doe.gov.ph/2-how-apply-net-metering-services-your-distribution-utility?withshield=1>