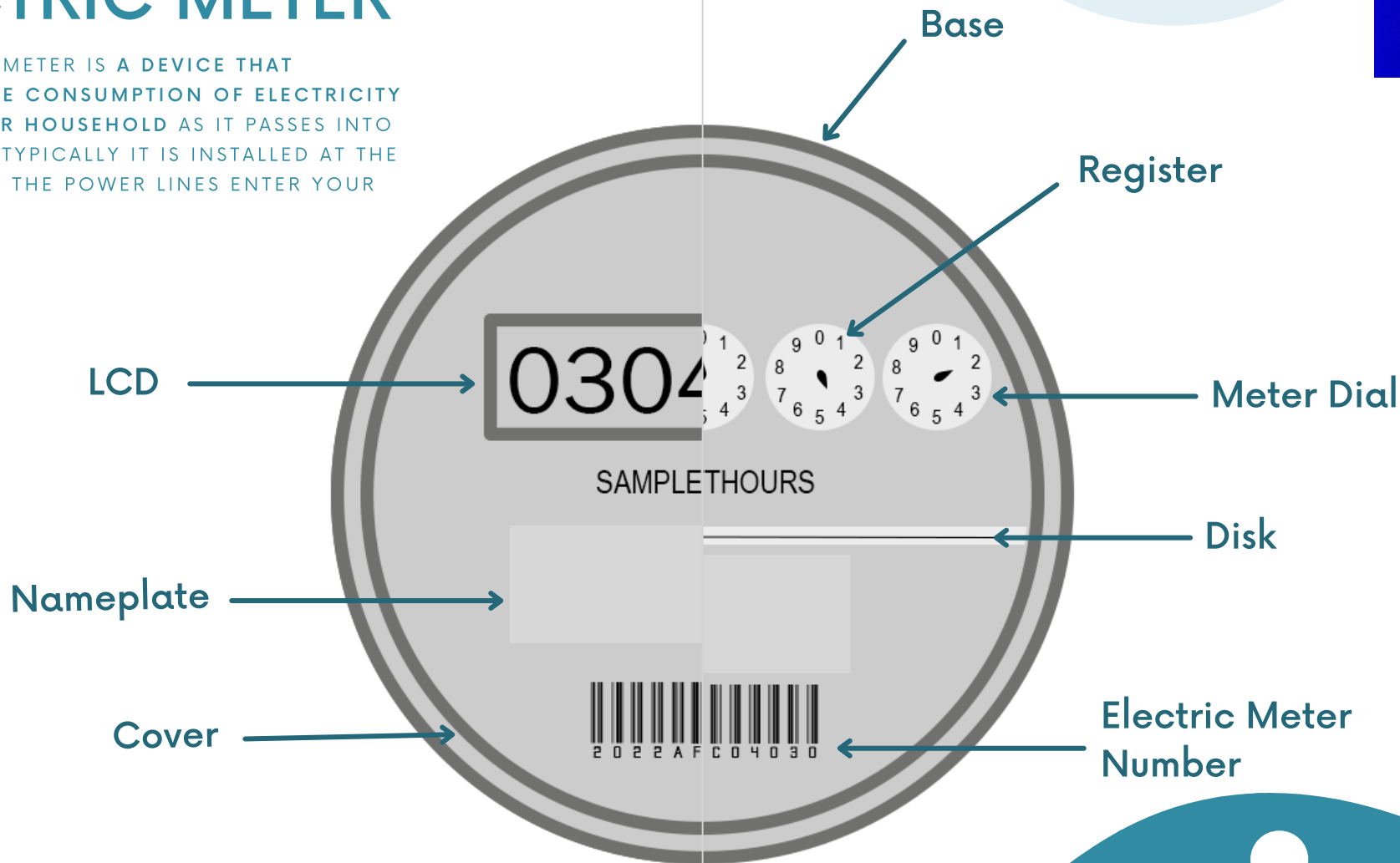




PARTS OF AN ELECTRIC METER

AN ELECTRIC METER IS A DEVICE THAT MEASURES THE CONSUMPTION OF ELECTRICITY USED BY YOUR HOUSEHOLD AS IT PASSES INTO YOUR HOME. TYPICALLY IT IS INSTALLED AT THE POINT WHERE THE POWER LINES ENTER YOUR HOUSE.

DIGITAL "SMART" METER



ELECTROMECHANICAL (ANALOG) METER



CONSUMER WELFARE AND PROMOTION OFFICE
DEPARTMENT OF ENERGY

📍 G/F DOE Annex Bldg., Rizal Drive, BGC, Taguig City 1632

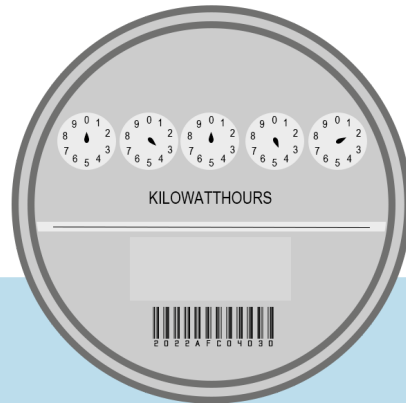
☎️ (02) 8840-2267
(02) 8479-2900 loc. 329

✉️ cwpo@doe.gov.ph



LEARN MORE ABOUT YOUR
RESIDENTIAL ELECTRIC METER

HOW TO READ YOUR ELECTRIC METER

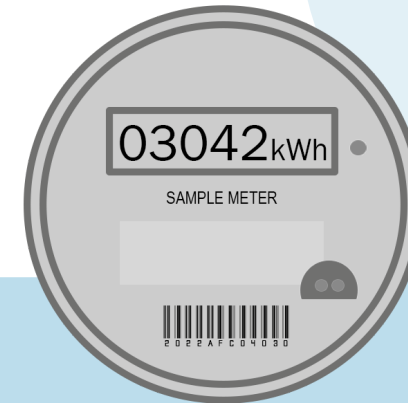


ELECTROMECHANICAL (ANALOG) METER

Electromechanical or Analog meters have either four or five meter dials that rotate in opposite directions. Dials B and D rotate counter clockwise while A, C, and E rotate clockwise.

To read your analog meter, start from left to right, reading the smallest number in each register the pointer has passed.

Like in the example above, the meter dials register a 03042 total kilowatt-hour (kWh).



DIGITAL "SMART" METER

In digital "smart" meter the numbers displayed on the LCD is the total current energy consumption.

Just like in electromechanical (analog) meters, electricity consumption is computed by kWh.

To compute your consumption for the current month, subtract the previous meter reading (kWh) to the current month's meter reading (kWh).

When a rollover takes place, it means that the meter has reached its total maximal value which causes the next value to be lower than the previous one.

To compute your current month energy consumption; rollover + (rollover - previous reading) + current reading (e.g., 99,999 + (99,999 - 98,500) + 925 = **102,423**)



TIPS:

Read your meter on the same hour each day to effectively check or monitor your average daily electric consumption (e.g., reading your meter at 7:00 A.M. everyday or every other day).

Knowing your daily consumption will help you control/manage the use of your electric fixtures and appliances to yield that amount of kWh-consumption you are willing to pay monthly.

REFERENCES:

- <https://residential.meralco.com.ph/billings-and-payments/uyb-2021/all-about-your-meter>
- <https://callmepower.com/useful-information/electricity-meter>
- <https://pinoyelectricalengineer.com/what-is-an-electric-meter/>
- <https://www.slideshare.net/RobertZientara/meters-in-ibm-maximo-asset-management>